

KIRBY-TECUMSEH 4 CYCLE ENGINE

ENGINE

HK25F

HK25G

HK25J

HK25K

HK25L

CRANKSHAFT

Part No.

GEF.262
EXT. 2

MAGNETO

Type

PHELON

Part No.

J3

CARBURETTOR

Type

WALBRO

TECUMSEH

Part No.

GEW.175B2

270L044

270L130

270L212

THROTTLE CONTROL

Control Ass.

6-158

STARTER

Type

REWIND

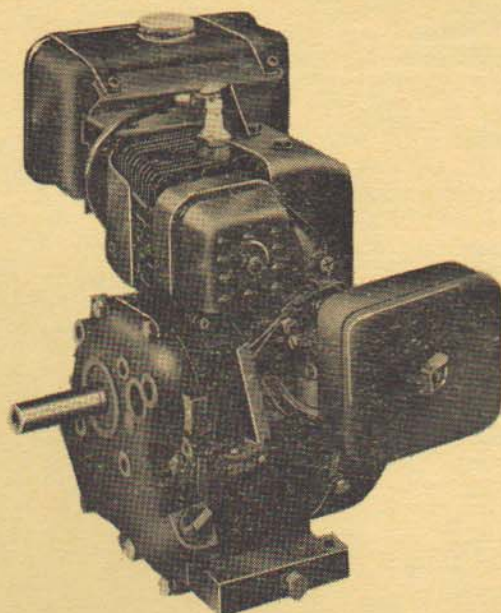
Part No.

12-381

AIR FILTER

Part No.

GEF.415



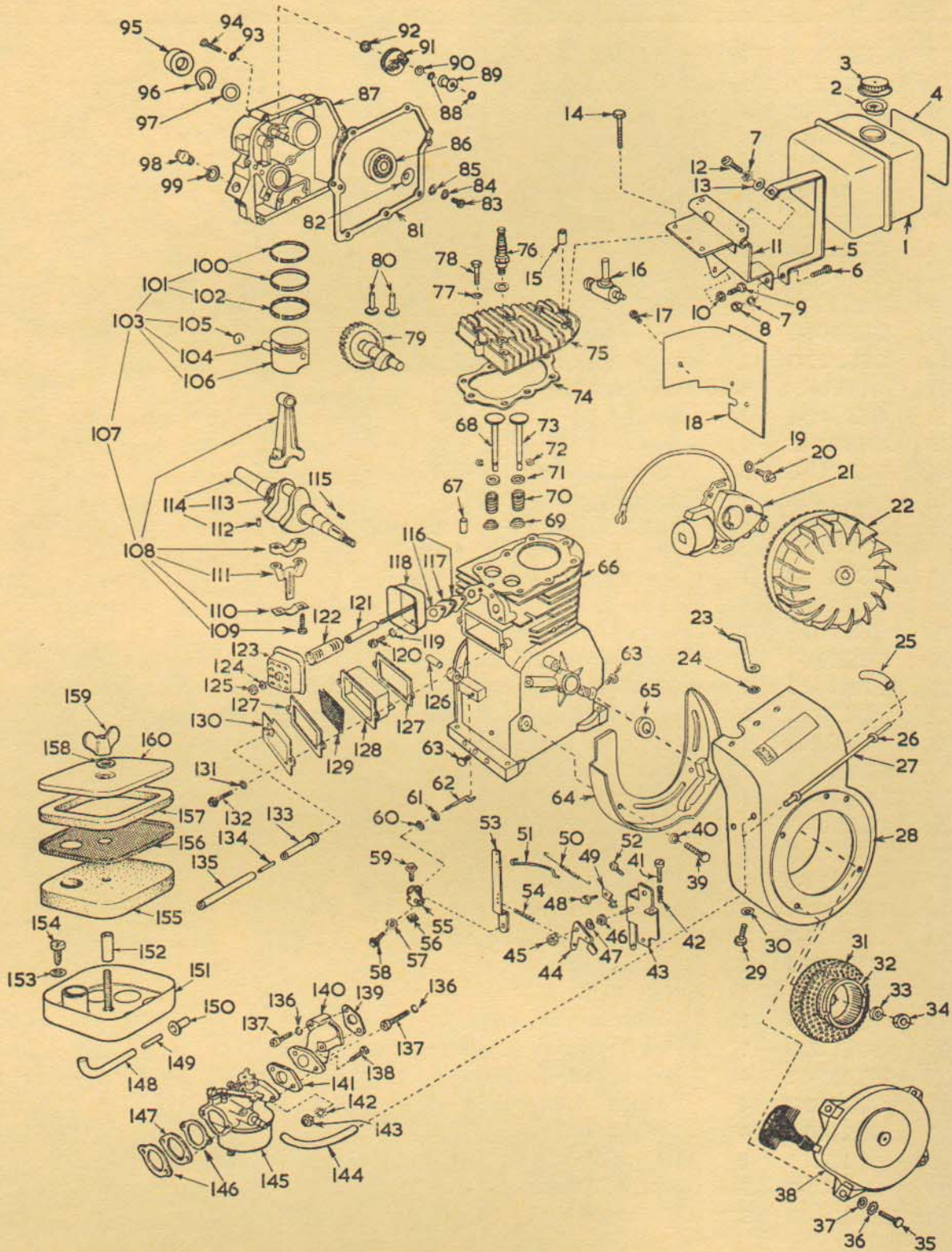
**MODELS HK25F
HK25G
HK25J
HK25K
HK25L**

KIRBY-TECUMSEH 4 CYCLE ENGINE

MODEL HK25F
MODEL HK25G
MODEL HK25J

MODEL HK25K
MODEL HK25L

Illust. B16



KIRBY-TECUMSEH 4 CYCLE ENGINE

MODEL HK25F
MODEL HK25G
MODEL HK25J

MODEL HK25K
MODEL HK25L

Ref. Illust. B16

ILLUST. No.	PART No.	QTY.	PART DESCRIPTION
1	GEF.420-2	1	Fuel tank assembly.
2	GE.376	1	Fuel cap baffle.
3	GE.388	1	Cap, petrol tank.
4	14-196	1	Nameplate 16".
	14-197	1	Nameplate 20".
	14-198	1	Nameplate 24".
5	GEF.426	1	Strap, mounting.
6	GES.102-4	1	Screw.
7	GES.123-7	2	Washer.
8	GES.113-21	1	Nut.
9	GES.101-2	1	Screw, bracket to cylinder.
10	GES.123-7	1	Washer, bracket to cylinder.
11	GEF.424	1	Bracket assembly.
12	GES.102-1	1	Screw.
13	GES.120-45	1	Washer.
14	242E019-2	5	Bolt, cylinder head, long.
15	GEF.212	1	Spacer, cylinder head.
16	25-197	1	Petrol tap and filter assembly incl. plunger 25-199, screw 25-029 and "O" rings 25-202.
17	GES.139-4	1	Bolt, blower extension.
18	GEF.196-1	1	Extension, blower housing.
19	GES.120-8	2	Washer, stator plate mounting.
20	GES.101-4	2	Bolt, stator plate mounting.
21	GEE.474-13	1	Stator plate assembly, refer magneto section.
22	GEF.463	1	Flywheel assembly, Phelon J3, refer magneto section.
23	GEF.206	1	Clip, plug shortening.
24	GES.123-8	1	Washer, clip to housing.
25	GEB.210-21	1	Hose, fuel line, 2 3/8".
26	GES.147-3	1	Retainer.
27	GEB.333	1	Tube, petrol line.
28	GEF.122-1	1	Blower housing assembly.
29	GES.102-1	2	Bolt, blower housing.
30	GES.123-7	2	Washer, blower housing.
31	GED.333	1	Screen, starter.
32	GED.139-1	1	Hub, starter.
33	GEF.225	1	Washer, conical spring.
34	GEF.220	1	Nut, flywheel.
35	GES.139-12	4	Bolt, starter mounting.
36	GES.123-7	4	Washer, shakeproof.
37	GES.120-8	4	Washer, flat.
38	12-381	1	Rewind starter.
39	GES.101-2	3	Bolt, baffle.
40	GES.126-12	3	Washer, baffle.

KIRBY-TECUMSEH 4 CYCLE ENGINE

MODEL HK25F
MODEL HK25G
MODEL HK25J

MODEL HK25K
MODEL HK25L

Ref. Illust. B16

ILLUST. No.	PART No.	QTY.	PART DESCRIPTION
41	GES.109-7	1	Screw, speed adjusting.
42	GEE.256	1	Spring, compression.
43	GEF.114	1	Bracket assembly, speed control.
44	GEF.201	1	Lever, bellcrank.
45	GEF.221	1	Locknut.
46	GEH.105	1	Bushing, bellcrank.
47	GEE.268	1	Wave washer.
48	GES.145-1	1	Screw and lockwasher assembly.
49	GEE.219	1	Clip.
50	GEF.273	1	Spring, throttle link.
51	GEF.230	1	Link, governor to throttle.
52	GES.145-1	1	Screw and lockwasher assembly.
53	GEF.204	1	Lever, governor.
54	GEF.215	1	Spring, governor lever to bellcrank.
55	GEE.203	1	Clamp, governor lever.
56	GES.140-3	1	Nut, governor lever clamp.
57	GES.124-3	1	Washer, shakeproof.
58	GES.142-2	1	Screw, governor lever.
59	GES.142-1	1	Screw, governor lever clamp.
60	GES.147-2	1	Retaining ring.
61	GES.120-2	1	Washer, flat.
62	GEF.192	1	Rod, governor.
63	GEF.193-1	2	Plug, oil drain.
64	GEF.113-1	1	Baffle, blower housing.
65	GES.118-5	1	Oil seal, cylinder block.
66	GEF.105-1	1	Engine block assembly.
67	GEE.193	1	Valve guide.
68	GEE.191	1	Valve, exhaust.
69	GEE.213	2	Cap, valve spring, lower.
70	GEE.253	2	Spring, valve.
71	GEE.212	2	Cap, valve spring, upper.
72	GEE.238	2	Retainer, valve.
73	GEE.190	1	Valve, inlet.
74	GEE.248-2	1	Gasket, cylinder head.
75	GEE.468	1	Cylinder head.
76	GEE.267	1	Spark plug.
77	GES.120-5	3	Washer, cylinder head.
78	242E019-3	3	Bolt, cylinder head, short.
79	GEF.156	1	Camshaft.
80	GEE.166	2	Valve lifter.
81	GEF.216	1	Gasket, cylinder cover.
82	GEF.279	1	Washer, conical spring.
83	GES.143-4	1	Retaining screw, bearing.

KIRBY-TECUMSEH 4 CYCLE ENGINE

**MODEL HK25F
MODEL HK25G
MODEL HK25J**

**MODEL HK25K
MODEL HK25L**

Ref. Illust. B16

ILLUST. No.	PART No.	QTY.	PART DESCRIPTION
84	GES.126-13	1	Lock washer, bearing retainer.
85	GES.120-11	1	Flat washer, bearing retainer.
86	GEF.226	1	Bearing, cylinder cover.
87	GEF.440-2	1	Cylinder cover assembly.
88	GES.146-2	2	Ring, governor retainer.
89	GEE.356	1	Spool, governor gear.
90	GES.120-43	1	Washer, governor shaft.
91	GEE.138	1	Governor gear assembly, nylon.
92	GEF.224	1	Washer, governor gear.
93	GES.123-7	1	Washer
94	GES.169-1	1	Bolt
95	GES.118-7	1	Oil seal, cover.
96	GES.146-5	1	Circlip, crankshaft.
97	GES.120-33	1	Spacer washer, crankshaft.
98	GEE.194	1	Plug, oil filler.
99	GEE.245	1	Gasket, oil filler plug.
100	GEE.239	2	Piston ring, compression (also in oversize).
101	GEE.135	1	Piston ring set, standard.
	GEE.135	1	Piston ring set, + .010" oversize.
	GEE.135	1	Piston ring set, + .020" oversize.
102	GEE.240	1	Piston ring, oil control (also in oversizes).
103	GEE.109	1	Piston assembly complete, standard.
	GEE.109	1	Piston assembly complete, + .010" oversize.
	GEE.109	1	Piston assembly complete, + .020" oversize.
104	GEE.236	1	Piston pin.
105	GEE.241	2	Circlip.
106	GEE.158	1	Piston.
	GEE.158	1	Piston less rings and pin.
107	GEF.110	1	Piston and connecting rod assembly.
108	GEF.111	1	Connecting rod assembly.
	GEF.111	1	Connecting rod assembly incl. items 109 and 110.
	GEF.111	1	Connecting rod assembly, + .010" undersize.
	GEF.111	1	Connecting rod assembly, + .020" undersize.
109	GEE.258-1	2	Bolt, connecting rod.
110	GEB.420	1	Lock strip, connecting rod.
111	GEF.194	1	Splasher, oil.
112	GEE.320	1	Pin, crankshaft.
113	GEE.156	1	Gear, crankshaft.
114	GEF.262	1	Crankshaft assembly—Ext. 2, 5/8" dia.
115	GEE.232	1	Key, flywheel.
116	GEE.251	2	Gasket.
117	GEE.269	1	Spacer, aluminium.
118	GEB.817	1	Backplate assembly.
119	GES.126-7	1	Washer, spring.
120	GES.139-26	1	Screw, mounting.

KIRBY-TECUMSEH 4 CYCLE ENGINE

**MODEL HK25F
MODEL HK25G
MODEL HK25J**

**MODEL HK25K
MODEL HK25L**

Ref. Illust. B16

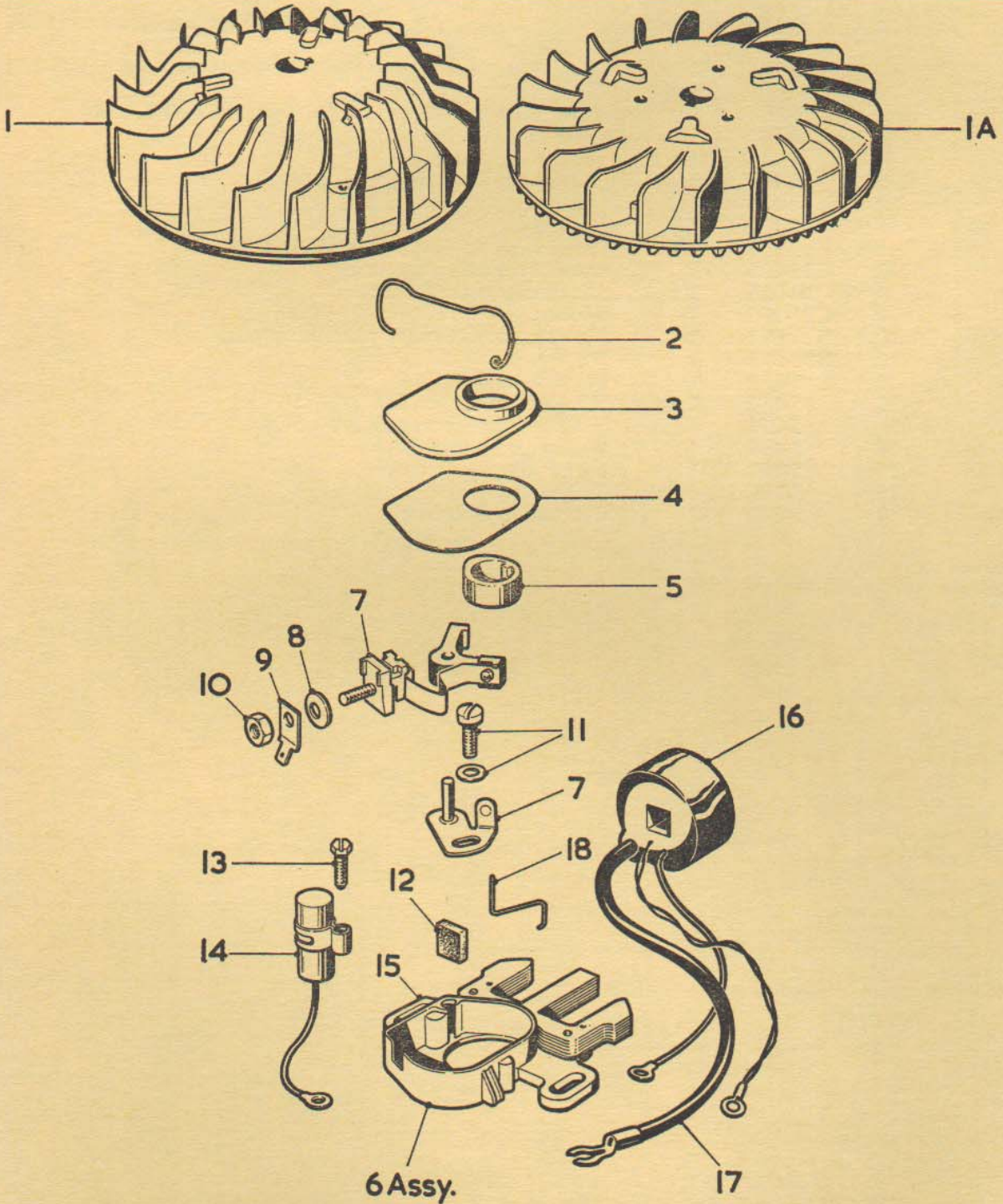
ILLUST. No.	PART No.	QTY.	PART DESCRIPTION	
121	GEB.553-5	1	Spacer tube, muffler.	
122	GEB.821	1	Tube muffler.	
123	GEE.461	1	Cover assembly, muffler.	
124	GES.120-13	1	Washer, flat.	
125	GES.115-6	1	Locknut.	
126	GEB.196	1	Pin, locating.	
127	GEE.247	2	Gasket, valve, spring box.	
128	GEF.117	1	Breather assembly.	
129	GEE.233	1	Element, breather.	
130	GEF.202	1	Cover, valve spring box.	
131	GES.126-13	1	Spring washer, breather.	
132	GES.139-4	1	Screw, breather.	
133	GEE.234-1	1	Tube, breather.	
134	GEF.229-1	1	Tube, breather extension.	
135	GEB.210-11	1	Hose, breather extension.	
136	GES.126-7	2	Washer, intake to block.	
137	GES.139-7	2	Bolt, intake to block, long.	
138	GES.102-4	1	Bolt, carburettor to intake.	
139	GEE.252	1	Gasket, intake to block.	
140	GEF.160	1	Pipe, intake.	
141	GEE.249	1	Gasket, carburettor to intake.	
142	GES.124-6	1	Washer, carburettor to intake.	
143	GES.115-4	1	Nut, carburettor to intake.	
144	GEB.210-4	1	Hose, fuel line 4".	
145	GEW.175B2	1	Carburettor assembly, Walbro—Models HK25F and HK25G.	} Refer Carburettor Section.
	270L044	1	Carburettor assembly, Tecumseh—Model HK25J.	
	270L130	1	Carburettor assembly, Tecumseh—Model HK25K.	
	270L212	1	Carburettor assembly, Tecumseh—Model HK25L.	
146	GEE.483	2	Gasket, carburettor—Models HK25F and HK25G.	
	GEH.174	2	Gasket, carburettor—Models HK25J, HK25L and HK25K.	
147	GEG.691	1	Spacer.	
148	GEB.210-11	1	Hose, breather extension.	
149	GEF.229	1	Pipe, breather extension.	
150	GEG.394	1	Sleeve, breather hose.	
151	GEF.414	1	Air filter body.	} Assy. P/N GEF.415
152	GEF.400	1	Spacer.	
153	GES.123-5	1	Washer.	
154	GES.139-30	1	Screw.	
155	GEF.409	1	Element, air filter.	
156	GEF.410	1	Screen, air filter.	
157	GEF.416	1	Seal, air filter.	
158	GES.120-5	1	Washer.	
159	GES.132-8	1	Wing nut.	
160	GEF.411	1	Cover, air filter.	
	GEF.238	1	Gasket Set	

PHELON MAGNETO—MODEL GEB.799

- MODEL J3
- MODEL J16
- MODEL J25

Model GEB.799 used on "Kirby Lauson" VK40 Engines
 Model J3 used on "Kirby Tecumseh" HK25 and HK30 Engines
 Model J16 used on "Kirby Tecumseh" VK40F1727 Engines
 Model J25 used on "Kirby Tecumseh" LV30 and VK30 Engines

Illust. D4



PHELON MAGNETO—MODEL GEB.799

—MODEL J3
—MODEL J16
—MODEL J25

Model GEB.799 used on "Kirby Lauson" VK40 Engines
 Model J3 used on "Kirby Tecumseh" HK25 and HK30 Engines
 Model J16 used on "Kirby Tecumseh" VK40F1727 Engines
 Model J25 used on "Kirby Tecumseh" LV30 and VK30 Engines

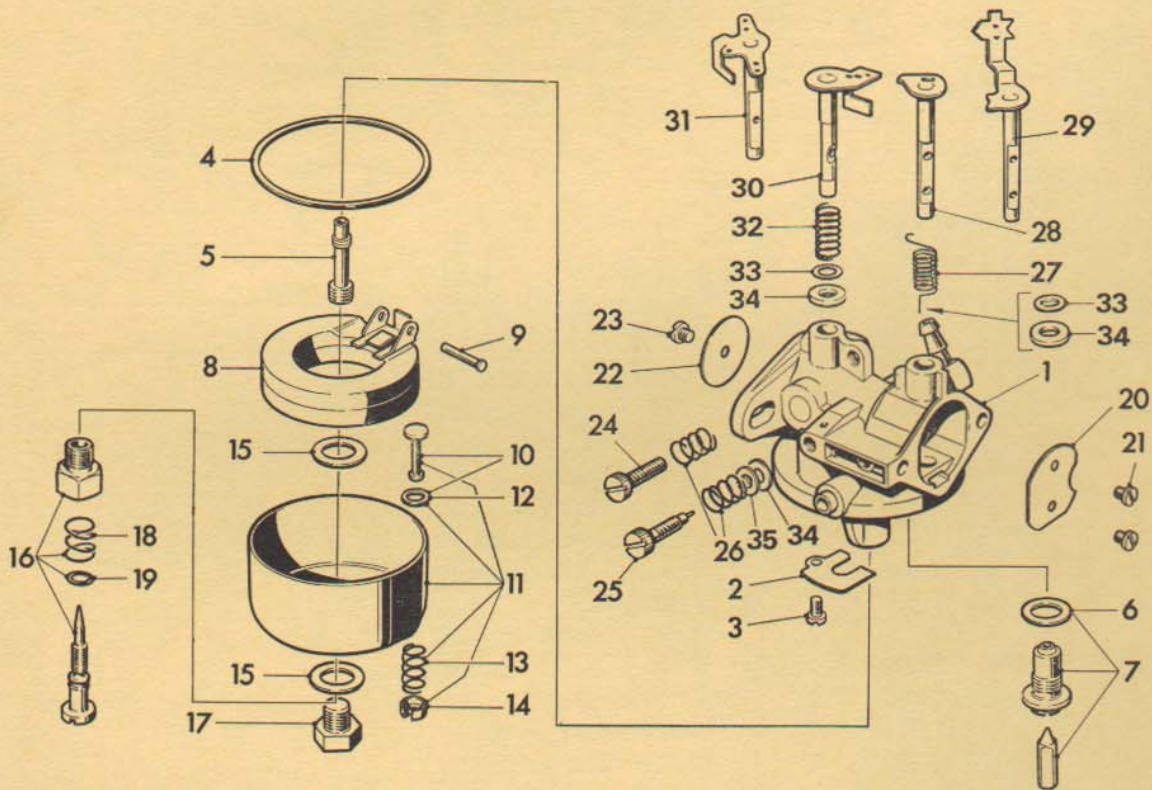
Ref. Illust. D4

ILLUST. No.	PART No.	QTY.	PART DESCRIPTION
NOTE:— The following parts are common to all models unless otherwise stated.			
	GEB.799	1	Magneto and flywheel assembly complete.
	J25	1	Magneto and flywheel assembly complete.
	J3	1	Magneto and flywheel assembly complete.
1	GEB.988	1	Flywheel assembly (Model GEB.799).
1A	213E035	1	Flywheel assembly (Model J25).
	213F016	1	Flywheel assembly (Model J16).
	GEF.463	1	Flywheel assembly used on Model J3.
2	GEG.341	1	Spring, breaker box cover.
3	GEG.342	1	Breaker box cover.
4	GEE.443	1	Gasket, dust cover.
5	GEE.144	1	Cam breaker (Model J25).
	GEG.340/2	1	Cam, breaker (used on Model GEB.799).
6	GEE.474/13	1	Stator plate assembly (incl. items 2 and 6-18 inclusive). All Models except J16.
	GEG.474-17	1	Stator plate assembly incl. items 2 and 6-18 inclusive—Model J16.
7	GEG.343	1	Contact breaker assembly.
8	GEG.344	1	Washer, terminal.
9	GEG.345	1	Tab, ground terminal.
10	GEG.346	1	Nut, terminal.
11	GEG.347	1	Screw and washer, breaker.
12	GEG.348	1	Felt, cam wiper.
13	GEG.349	1	Screw, condenser.
14	GEG.350	1	Condenser.
15	GEG.351	1	Core and plate assembly.
16	GEG.352	1	Coil assembly.
17	GEG.353	1	Lead wire.
18	GEG.692	1	Clip, coil retaining (supersedes GEG.371).

WALBRO CARBURETTOR

MODELS GEW.50, GEW.50A and GEW.50B (Fitted to Kirby Lauson VK30 Engines)
MODELS GEW.92 and GEW.92B (Fitted to Kirby Lauson VK40 Engines)
MODEL GEW.175B2 (Fitted to Kirby Tecumseh HK25F and HK25G Engines)

Illust. E6



WALBRO CARBURETTOR

MODELS GEW.50, GEW.50A and GEW.50B (Fitted to Kirby Lauson VK30)
MODELS GEW.92 and GEW.92B (Fitted to Kirby Lauson VK40)
MODEL GEW.175B2 (Fitted to Kirby Tecumseh HK25F and HK25G)

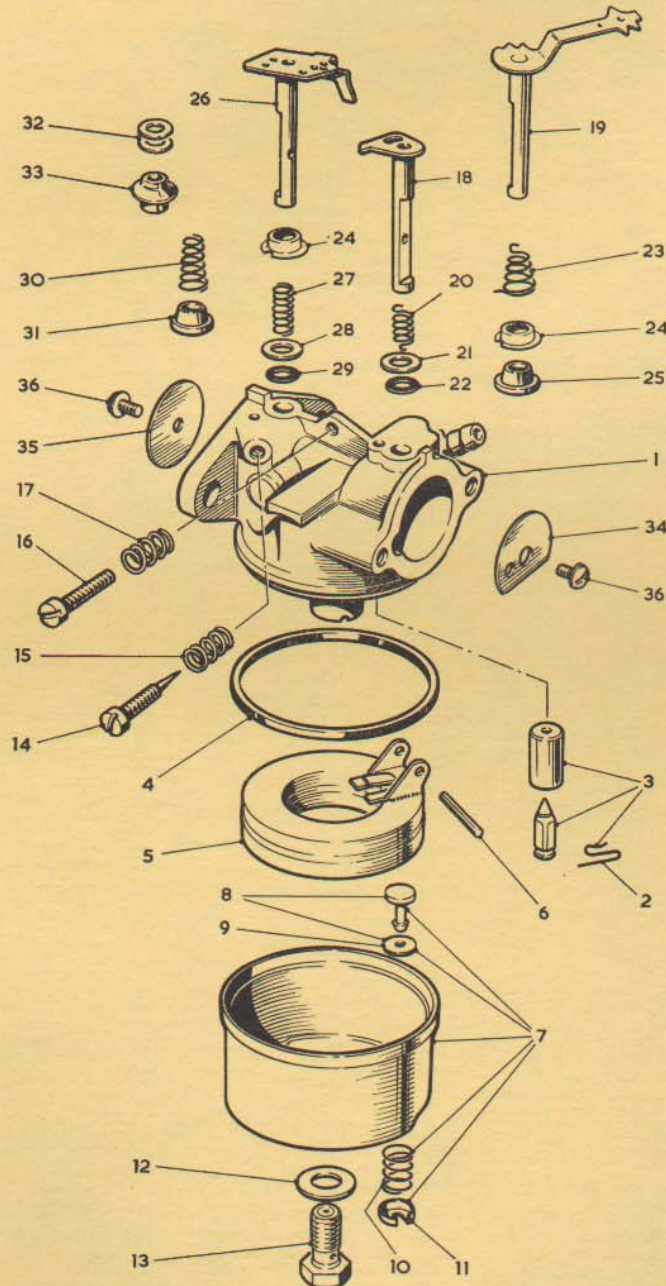
Ref. Illust. E6

ILLUST. No.	PART No.	QTY.	PART DESCRIPTION
1	GEW.202	1	Body assembly—GEW.50B.
	GEW.209	1	Body assembly—GEW.92.
	GEW.212	1	Body assembly—GEW.50A.
	GEW.214	1	Body Assembly—GEW.50B.
	GEW.216	1	Body assembly—GEW.92B.
2	GEW.223	1	Body assembly—GEW.175B2.
	GEW.317	1	Baffle, bowl vent.
3	GES.148-2	1	Screw, baffle.
4	GEW.331†*	1	Gasket, bowl rim to body (incl. in gasket and repair kit).
5	GEW.318	1	Nozzle—GEW.50, GEW.92 and GEW.175B2.
	GEW.434-3	1	Nozzle—GEW.50A.
	GEW.434-7	1	Nozzle—GEW.92B.
	GEW.434-11	1	Nozzle—GEW.50B.
6	GEW.332†	1	Gasket, valve seat (incl. in gasket kit).
7	GEW.481*	1	Float valve, seat and gasket assy. (incl. in repair kit).
8	GEW.311	1	Float assembly.
9	GEW.337*	1	Shaft, float (incl. in repair kit).
10	GEW.316	1	Stem and gasket assembly.
11	GEW.310	1	Bowl and drain assembly.
12	GEW.333†	1	Gasket, bowl drain stem (incl. in gasket set).
13	GEW.327	1	Spring, bowl drain stem.
14	GEW.321	1	Retainer, bowl drain stem.
15	GES.122-7†*	1	Gasket, bowl retainer, supersedes GEW.334 (incl. in gasket and repair kit).
16	GEW.319	1	Needle assembly, power adjustment — GEW.50, GEW.92, GEW.92B and GEW.175B2.
17	GEW.477	1	Screw, bowl retaining — GEW.50A, GEW.50B and GEW.175B2.
18	GEW.328	1	Spring, power adjusting needle.
19	GEW.335	1	“O” ring—GEW.50, GEW.92 and GEW.92B.
20	GEW.401	1	Disc, choke.
21	GES.26-1	2	Screw, choke disc.
22	GEW.312	1	Disc, throttle.
23	GES.150-2	1	Screw, throttle disc.
24	GES.109-9	1	Screw, idle speed adjustment.
25	GEW.426*	1	Screw, idle mixture adjustment (incl. in repair kit).
26	GEW.329	2	Spring, adjusting screw.
27	GEW.409	1	Spring choke return—GEW.50B.
	GEW.411	1	Spring, choke return — GEW.50, GEW.50A, GEW.92 and GEW.92B.
28	GEW.330-1	1	Spring, choke return—GEW.175B2.
	GEW.292	1	Shaft and lever assembly, choke — all models except GEW.175B2.
29	GEW.291	1	Shaft and lever assembly, choke—GEW.175B2.
30	GEW.282	1	Shaft and lever assembly, throttle — all models except GEW.175B2.
31	GEW.532	1	Shaft and lever assembly, throttle—GEW.175B2.
32	GEW.415	1	Spring, throttle—GEW.50B.
	GEW.533	1	Spring, throttle—GEW.175B2.
33	GES.120-44	2	Steel washer—GEW.50B, GEW.175B2.
34	GES.165-4	3	“O” ring—GEW.50B and GEW.175B2.
35	GES.120-47	1	Steel washer, GEW.50B and GEW.175B2.
	GEW.503	1	Gasket kit, includes part Nos. marked †.
	GEW.496	1	Repair kit, includes part Nos. marked *.
	GEW.549	1	Not illustrated—Welsh plug kit.

TECUMSEH CARBURETTOR

MODEL 270L026 FITTED TO VK30E ENGINES
MODEL 270L044 FITTED TO HK25J ENGINES
MODEL 270L095 FITTED TO VK30G ENGINES
MODEL 270L126 FITTED TO VK30H4350 ENGINES
MODEL 270L130 FITTED TO HK25K ENGINES
MODEL 270L141 FITTED TO VK30H4359 ENGINES
MODEL 270L158 FITTED TO VK30H4336 & VK30H4337 ENGINES
MODEL 270L201 FITTED TO VK30K, VK30L4360 & VK30L4367.
MODEL 270L212 FITTED TO HK25L & HK30 ENGINES

Illust. E7



TECUMSEH CARBURETTOR

Ref. Illust. E7

ILLUST. No.	PART No.	QTY.	PART DESCRIPTION
1	295L100*	1	Body assembly (incl. nozzle and valve seat) Models 270L095 and 270L026.
	295L126	1	Body assy. (incl. nozzle, valve seat) Models 270L158, 270L141.
	295L139	1	Body assembly (incl. nozzle and valve seat) Model 270L126.
	295L173	1	Body assembly (incl. nozzle and valve seat) Model 270L201.
	295L123	1	Body assembly (incl. nozzle and valve seat) Model 270L130.
	295L100-1	1	Body assembly (incl. nozzle and valve seat) Model 270L044.
	295L182	1	Body assembly (incl. nozzle and valve seat) Model 270L212.
2	277L018	1	Clip, float valve—Model 270L026 only.
3	379L080	1	Float valve body assembly—Model 270L026.
	379L069	1	Float valve body assembly—all Models except 270L026.
4	254L021	1	Seal, bowl rim to body.
5	284L011	1	Float assembly.
6	238L015	1	Shaft, float.
7	383L047	1	Float bowl assembly—Models 270L026, 270L095 and 270L044.
	383L108	1	Float bowl assembly—all Models except 270L026, 270L095 and 270L044.
8	GEW.316	1	Bowl drain assembly.
9	GEW.333	1	Seal, bowl drain stem.
10	GEW.327	1	Spring, bowl drain stem.
11	GEW.321	1	Retainer, bowl drain stem.
12	GES.122-7	1	Gasket, bowl retaining—Models 270L026, 270L095 and 270L044.
	GES.120-10	1	Gasket, bowl retaining—Models 270L158, 270L126, 270L130 & 270L212.
	GES.122-10	1	Gasket, bowl retaining—Models 270L141 and 270L201.
13	241L028-80	1	Bowl retainer and jet assembly—Models 270L158, 270L130 and 270L212.
	241L017-65	1	Bowl retainer and jet assembly—Models 270L095, 270L026 and 270L044.
	241L028-85	1	Bowl retainer and jet assembly—Model 270L126.
	241L028-75	1	Bowl retainer and jet assembly—Model 270L141.
	241L028-90	1	Bowl retainer and jet assembly—Model 270L201.
14	383L062	1	Needle, idle mixture adjustment—Models 270L026, 270L095 and 270L044.
	383L098	1	Needle, idle mixture adjustment—all Models except 270L026, 270L095 and 270L044.
15	257L040	1	Spring, idle mixture adjustment—Models 270L026, 270L095 and 270L044.
	257L087	1	Spring, idle mixture adjustment—all Models except 270L026, 270L095 and 270L044.
16	GES.109-7	1	Screw, idle speed adjustment.
17	257L036	1	Spring, idle speed adjustment.
18	252L028	1	Choke shaft assembly—Models 270L026, 270L095, 270L158, 270L126 and 270L141.
	252L064	1	Choke shaft assembly—Models 270L166 and 270L201.
19	252L041	1	Choke shaft assembly—Models 270L044, 270L130 and 270L212.
20	257L035	1	Spring, choke return—Model 270L026.
	GEW.330-2	1	Spring, choke return—Models 270L044, 270L130 and 270L212.
21	GES.120-44	1	Washer, choke shaft—Model 270L026.
22	GES.165-4	1	Seal, choke shaft—Model 270L026.
	254L026	1	Seal, choke shaft—Models 270L044 and 270L130.
	254L028	1	Seal, choke shaft—Model 270L212.
23	257L069	1	Spring, choke return—Models 270L095, 270L158 and 270L126.
	257L094	1	Spring, choke return—Model 270L201.
	257L091	1	Spring, choke return, Model 270L141.
24	250L025	2	Cap, seal retaining—Models 270L201 and 270L212.
25	254L026	1	Seal, choke shaft—all Models except 270L026, 270L044 and 270L130.

TECUMSEH CARBURETTOR

Ref. Illust. E7

ILLUST. No.	PART No.	QTY.	PART DESCRIPTION
26	252L026	1	Throttle shaft—all Models except 270L212.
	252L026-3	1	Throttle shaft—Model 270L212.
27	GEW.415	1	Spring, throttle shaft—Model 270L026.
28	GES.120-44	1	Washer, throttle shaft, Models 270L026, 270L044 and 270L130.
29	GES.165-4	1	Seal, throttle shaft—Model 270L026.
	254L028	1	Seal, throttle shaft—Models 270L201 and 270L212.
30	257L051	1	Spring, throttle shaft—Models 270L095 and 270L141.
31	254L026	1	Seal, throttle shaft—Models 270L095, 270L141, 270L044 and 270L130.
32	GES.120-44	2	Washer, throttle shaft—Models 270L158, 270L126 and 270L130.
33	382K019	1	Sleeve, throttle shaft—Models 270L158 and 270L126.
34	249L019	1	Disc, choke—all Models except 270L158.
	249L025	1	Disc, choke—Model 270L158.
35	249L013	1	Disc, throttle—all Models except 270L201 and 270L212.
	249L027	1	Disc, throttle—Models 270L201 and 270L212.
36	GES.26-1	1	Screw.
	379L070	1	Gasket set—Models 270L095, 270L026 and 270L044.
	379L089	1	Gasket set—Models 270L158, 270L126, 270L141 and 270L130.
	379L095	1	Gasket set—Models 270L212 and 270L201.
	379L023	1	Repair kit—Model 270L026.
	379L068	1	Repair kit—Models 270L095 and 270L044.
	379L088	1	Repair kit—Models 270L158, 270L126, 270L141 and 270L130.
	379L094	1	Repair kit—Models 270L201 and 270L212.
	379L071	1	Body plug and jet kit.
	379L099*	1	Carburettor conversion kit—Models 270L026 and 270L095.
	379L101*	1	Carburettor conversion kit—Model 270L044.